

PROView

PI-RADST™ v2 report guidelines applied to the review, assessment and reporting of multi-parametric MR prostate exams

Multi-parametric MR of the prostate is increasingly easy to perform on MR scanners, but the ability to report per medical association guidelines has been challenging, especially in environments where productivity is increasingly critical.

PI-RADST™ v2 includes structured reporting guidelines and was developed by an international group and published by the American College of Radiology in 2015 to standardize MR evaluation of prostate cancer.

The PROView workflow includes

1. Prostate volume
2. PSA Density
3. Lesion(s) mapping to sectors and measurement
4. Scoring of T2-weighted, diffusion weighted imaging (DWI) and, when applicable, dynamic contrast enhanced (DCE) acquisitions.

Overview

ProView offers a guided workflow to assess multi-parametric MR prostate exams. From measurement of prostate and lesion volume, through scoring of lesions and inputting clinical information to form a comprehensive report, ProView offers a simple workflow to assess multi-parametric prostate exams.

Highlights

- Guided workflow with intelligent display based on smart layout to display prostate MR images.
- New measurement tool for prostate volume calculation.
- Flexible options for adding new lesions.
- New sector mapping to localize lesions per guidelines.
- Tool-tip reminders of PI-RADST™ v2 scoring definition.
- Provides additional clinical information through (relative) ROI measurements, curves, and color parametric images.
- Enables MR to MR rigid registration to reduce patient motion effects.
- Volume Viewer user interface offers access to standard measurement options.
- Standardized report creation and export.
- Accessible from PC, laptop, PACS/RIS workstation for streamlined workflow.



Visit us: www.gehealthcare.com/aw/platforms/aw-server/

Features

- Input patient history and PSA level
- Measure prostate volume
- Dedicated measurement tool for prostate volume
- Identify lesion via region of interest tools
- Auto-contour offers single-click candidate region of interest
- Define lesion location on PI-RADS™ v2 sector template
- Score T2w, DWI and DCE (if applicable) per PI-RADS™ v2 assessment guidelines
- Automatic computation of final score
- Multiple lesions may be defined
- Report preview and saving
- Export report to PDF or DICOM format

System Requirements

- AW Server 3.2 and above
- AW 4.7 Workstation and above
- Color Monitors

Software Requirements

- Volume Viewer 13.4

Indications for Use

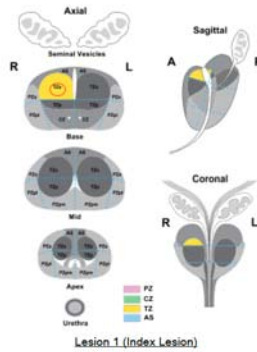
PROView is a software that allows the processing, review, analysis, and communication of 3D reconstructed images and their relationship to originally acquired images from MR

Scanning devices. The combination of acquired images, reconstructed images, annotations, measurements and assessment performed by the clinician are intended to provide to the referring physician clinically relevant information that may aid in diagnosis and treatment planning.

Regulatory Compliance

This product complies with the European Council Directive 93/42/EEC Medical Device Directive as amended by European Council Directive 2007/47/EC.

Excerpts from PROView Report



PROView reports include sector maps with the lesion locations highlighted (left).

Tables of quantitative values (lesion scores, size, volume) are also available (below).

Prostate Gland Volume : 70.64 cm³

Dist 1 : 45.0 mm
Dist 2 : 59.6 mm
Dist 3 : 50.6 mm

PSA Level : 9.1 ng/ml

PSA Density : 0.13

Details of Lesion(s) :

Findings	MR Tech	PI-RADS Score				MR - ADC (10 ⁻⁶ mm ² /s) ⁽⁵⁾			Length	Volume	Extra prostatic disease ?
		T2	DWI	DCE	Overall	Min	Avg	Stdev			
Lesion 1 (Index Lesion) Main zone : PZ or TZ base_RTZa	3	2	+	3	1398 ⁽⁵⁾	1864 ⁽⁵⁾	232.6 ⁽⁵⁾	10 mm	630 mm ³	No	
Lesion 2 Main zone : PZ or TZ mid_LTZa, mid_LTZp	3	2	+	3	984 ⁽⁶⁾	1815 ⁽⁶⁾	455.4 ⁽⁶⁾	9.0 mm		No	

